

rotronic

Datenblatt - Fiche technique - Data sheet

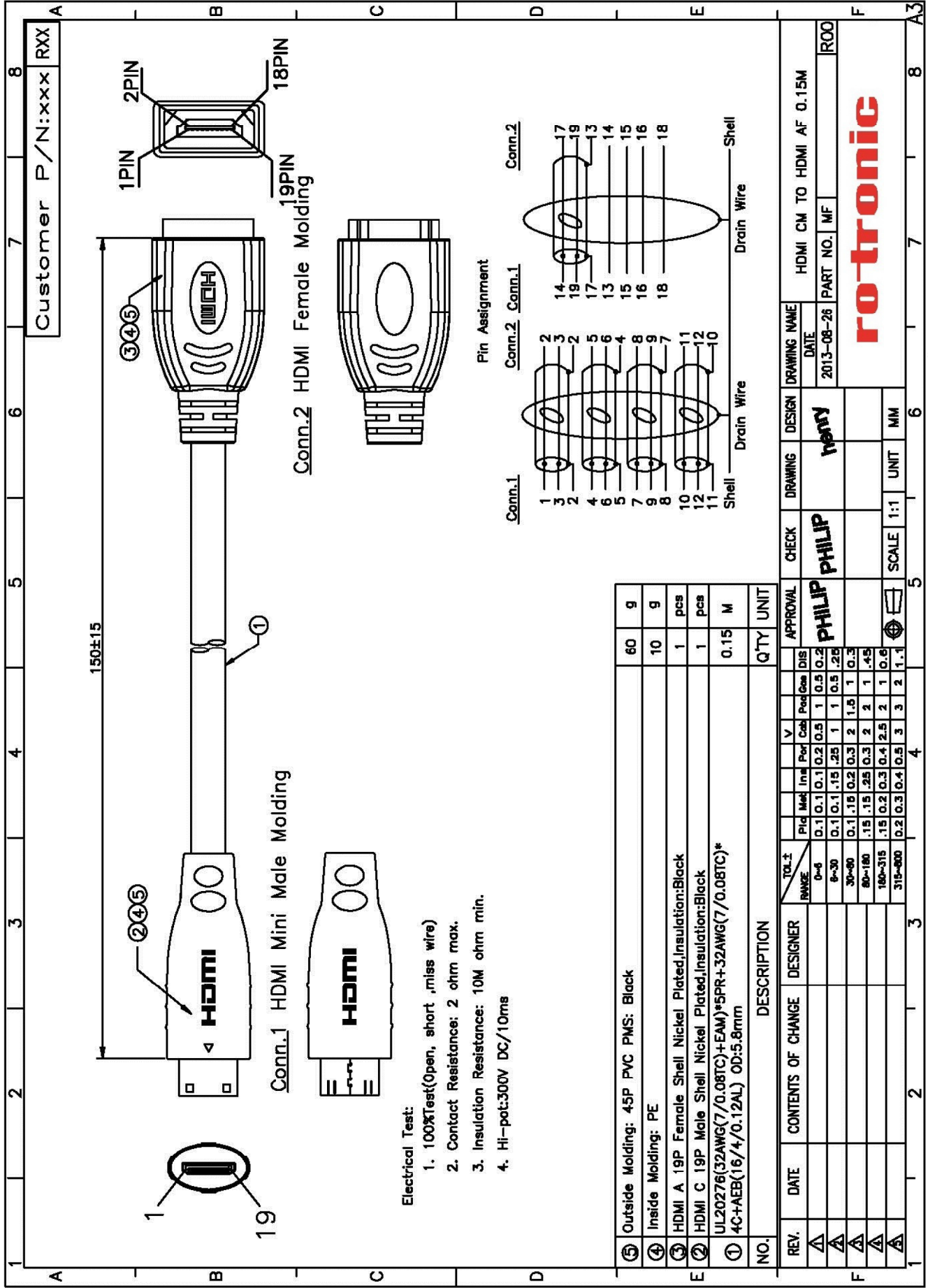
12.99.3120



VALUE HDMI Adapter, HDMI BU – HDMI Mini ST,

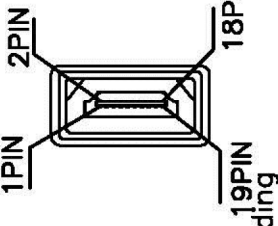
VALUE Adaptateur HDMI, HDMI F – HDMI Mini M,

VALUE Cableadapter, HDMI F – HDMI Mini M,

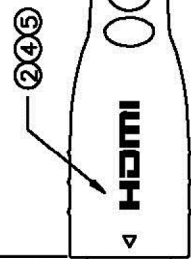


Customer P/N:xxx RXX

150±15



Conn.2 HDMI Female Molding

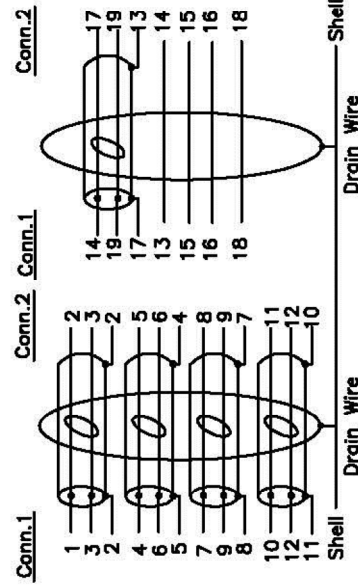


Conn.1 HDMI Mini Male Molding

Electrical Test:

1. 100%Test(Open, short ,miss wire)
2. Contact Resistance: 2 ohm max.
3. Insulation Resistance: 10M ohm min.
4. Hi-pot:300V DC/10ms

Pin Assignment



NO.	DESCRIPTION	QTY	UNIT
⑤	Outside Molding: 45P PVC PMS: Black	60	g
④	Inside Molding: PE	10	g
③	HDMI A 19P Female Shell Nickel Plated,Insulation:Black	1	pcs
②	HDMI C 19P Male Shell Nickel Plated,Insulation:Black	1	pcs
①	UL20276(32AWG(7/0.08TC)+EAM)*SPR+32AWG(7/0.08TC)* 4C+AEB(16/4/0.12AL) OD:5.8mm	0.15	M

REV.	DATE	CONTENTS OF CHANGE	DESIGNER	APPROVAL	CHECK	DRAWING	DESIGN	DRAWING NAME
△				PHILIP	PHILIP	new	HDMI CM TO HDMI AF 0.15M	
△								
△								
△								
△								

DATE: 2013-08-26
PART NO.: MF
R00

SCALE: 1:1 UNIT: MM

rotronic