

rotronic

Datenblatt - Fiche technique - Data sheet

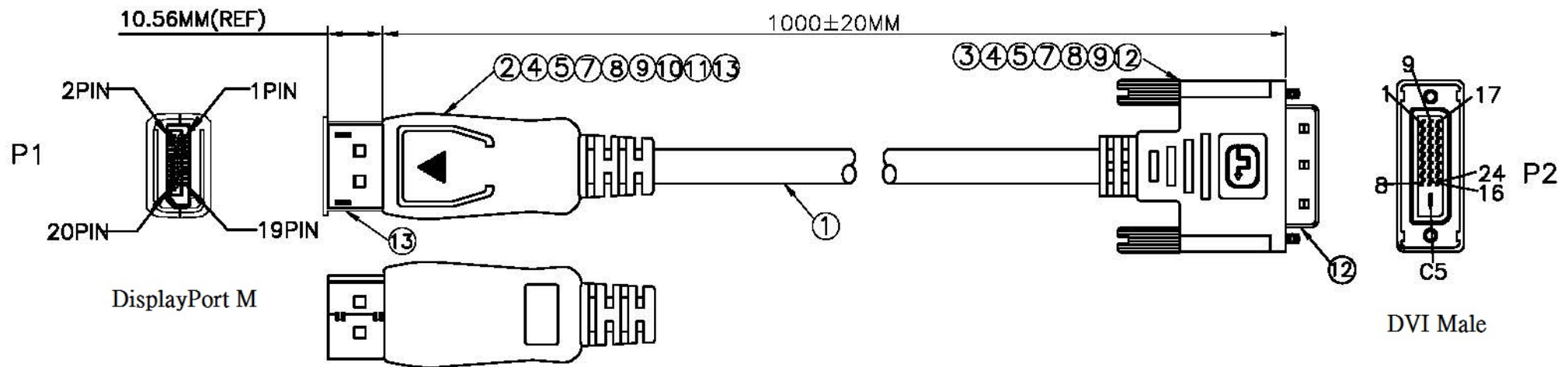
11.04.5613



ROLINE DisplayPort Kabel DP ST – DVI ST, 1,0m

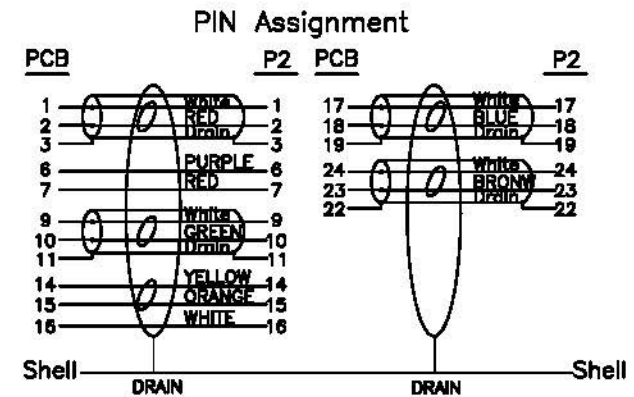
ROLINE Câble DisplayPort DP M – DVI M, 1,0m

ROLINE DisplayPort Cable, DP M – DVI M, 1 m



ELECTRICAL TEST:

- 1.100% OPEN & SHORT & MIS WIRE TEST
- 2.CONTACT RESISTANCE:2 OHM(MAX)
- 3.INSULATION RESISTANCE:10M OHM(MIN)
- 4.HI-POT TEST:DC 300V/10ms



13	DisplayPort M TRANSPARENT DUST COVER	1	pcs
12	DVI M TRANSPARENT DUST COVER	1	pcs
11	Display Port M ABS Up SHELL, COLOR:BLACK	1	pcs
10	Display Port M ABS Down SHELL, COLOR:BLACK	1	pcs
9	H.S.T:Ø1.5*42mm	1	pcs
8	H.S.T:Ø1.0*10mm	8	pcs
7	H.S.T:Ø2.0*10mm	8	pcs
6	#4-40UNC 2.8*45MM NICKEL PLATED	2	pcs
5	45P PVC COLOR:BLACK	38	g
4	TRANSPARENT PE	5	g
3	DVI(24+1)M SOLDER TYPE, SHELL NICKEL, PIN GOLD	1	pcs
2	DISPLAY PORT M+PCB+SMT	1	set
1	UL 20276 (30AWG*1PR+EAM)*4+30AWG*1PR+30AWG*3C+AEB(AL16*7/0.12) OD:5.5mm Black	1	M
NO	DESCRIPTION	Q'TY	UNIT

	TOLERANCE			ROLINE DisplayPort Cable, DP M / DVI M 1m, black color		
	INCHES	M/M				
	.X	.015				.30
.XX	.010	.10	Item No. 11.04.5613			
.XXX	.005	.05				
DRAWN BY			SCALE	NONE	DRAWING NO.:	REV. A
CHECK BY			UNIT	MM		
APPD BY			DATE			