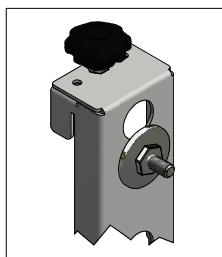


Specifications

- Screen Array Configuration : 2X2
- Orientation: Portrait
- Adjustments (Y) Micro-Adjustments 12mm.
- Adjustments (Y1) Micro-Adjustments 15mm.
- Adjustments (X) Adjustments +/- 22mm.
- Adjustments (Z) Adjustments +/- 7mm.
- Mounting Pattern Vesa 400x600mm. / 400x400mm.
- Typical Screen Sizes: 46" - 47"
- Weight Capacity: 30 Kg to Screen
- Galvanized steel shets



Quick mounting



POS.	QTY	DESCRIPTION
1	4	LCD BRACKET
2	4	SCREEN 46" / 47" VESA 400x400 / 400x600
3	2	OMEGA L.1115mm.
4	2	VERTICAL ANGULAR