



**Datenblatt - Fiche technique - Data sheet  
S3641 ~ S3643**

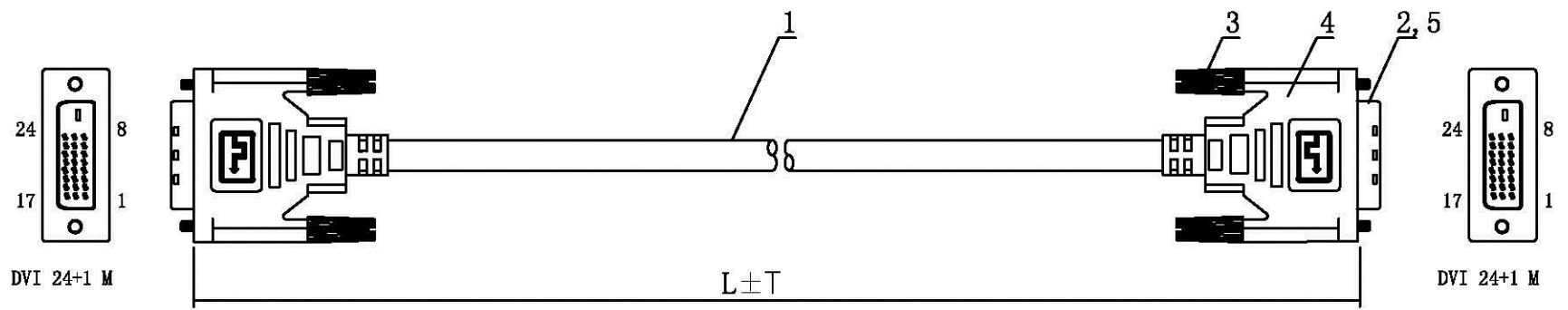


**Monitorkabel DVI, DVI ST-ST, (24+1) dual link**

**Câble DVI, DVI M-M, (24+1) dual link**

**Monitor DVI Cable, DVI M – DVI M, (24+1) dual link**

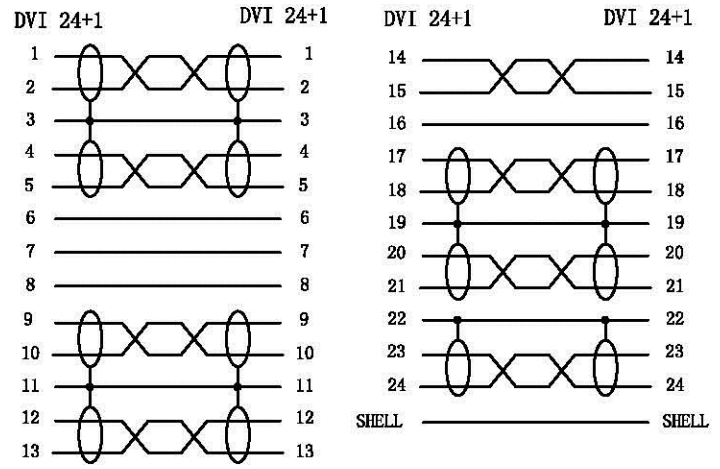
| REV | DESCRIPTION |
|-----|-------------|
| B/1 |             |



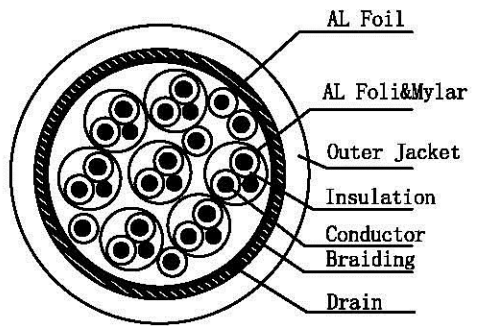
**NOTE**

- 1. Electrical test:
  - (1) 100% open short and miss wire test;
  - (2) 100% 1080P test via source and sink;
  - (3) Insulation resistance: DC300V/5s 15Mohm min;
  - (4) Contactor resistance: 2.5ohm Max;
  - (5) Dielectric strength: 150V AC/minute, 1mA.
- 2. Full RoHS compliant
- 3. Cable mark: Digital Visual Interface (DVI) Cable DUAL LINK 24+1

**PIN OUT**



**CABLE STRUCTURE**



**PRODUCT FAMILY**

| ITEM NO. | L (LENGTH) | T (TOLERANCE) |
|----------|------------|---------------|
| S3641    | 2M         | 0.03M         |
| S3642    | 3M         | 0.05M         |
| S3643    | 5M         | 0.06M         |

| 5   |          | DUST COVER | LDPE  | 2     | TRANSPARENCE  |
|-----|----------|------------|---|-------|---------------|
| 4   |          | MOLDED     | PVC   | 2     | BLACK         |
| 3   |          | SCREW      | METAL   | 2     | NICKEL PLATED |
| 2   |          | CONN.      | DVI (24+1)M, nickel plated shell  | 2     |               |
| 1   |          | CABLE      | 30AWG, ((#30+FPE)*1P+#30+AL)*7C+ (#30+PE)*1P+(#30+PE)*4C+ADB CCS material | 1     | BLACK         |
| NO. | PART NO. | PART NAME  | MATERIAL  | Q' TY | REMARKS       |

|                 |  |             |                                  |      |     |
|-----------------|--|-------------|----------------------------------|------|-----|
| <b>rotronic</b> |  | ITEM NO.    | S3641 / S3642 / S3643            |      |     |
|                 |  | DESCRIPTION | DVI Cable, Dual Link, M/M, Black |      |     |
| DRAW            |  | CONSUMER    |                                  |      |     |
| CHECK           |  | DATE        |                                  | REV. | A/0 |
| APP.            |  | SHEET       | 1/1                              | UNIT | mm  |
|                 |  | SCALE       | 1:1                              |      |     |